



Market Place, Ely, CB7 4NP



Market Place

Ely,
CB7 4NP

First floor flat located in central location with gated access. Accommodation comprises open plan kitchen/living room, bedroom and shower room. Available: 01/07/2026. Deposit: £923. Holding deposit: £184. Council tax band: B. EPC: D

LOCATION

Ely is an historic Cathedral City which provides an excellent range of shopping facilities, schools catering for all ages and various sporting and social activities including the recently opened Ely Leisure Village incorporating multi-screen cinema and restaurants. The main A10 road at Ely provides access to Cambridge which in turn links with the A14 and M11 motorway to London. Ely also has a mainline station which provides an electrified rail service to Cambridge and London.



£800 PCM





OPEN PLAN KITCHEN/LIVING ROOM

with oven, hob, extractor and plumbing for washing machine.

MEZZANINE

BEDROOM

with Juliette balcony.

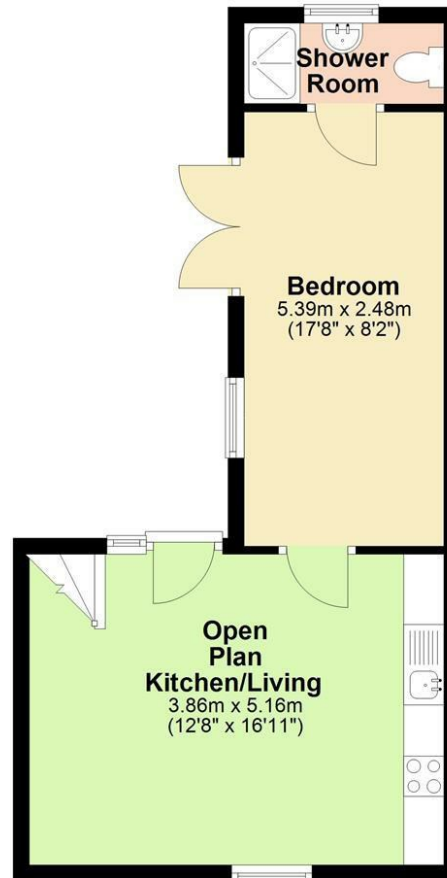
SHOWER ROOM

LETTING AGENTS NOTES

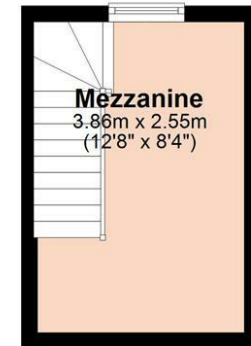
For more information on this property please refer to the Material Information brochure on our Website.



Ground Floor
Approx. 36.3 sq. metres (390.7 sq. feet)



Mezzanine
Approx. 9.8 sq. metres (106.0 sq. feet)



Total area: approx. 46.1 sq. metres (496.7 sq. feet)

Energy Efficiency Rating		
	Current	Potential
<i>Very energy efficient - lower running costs</i>		
(92 plus) A		
(81-91) B		
(69-80) C		
(55-68) D	61	67
(39-54) E		
(21-38) F		
(1-20) G		
<i>Not energy efficient - higher running costs</i>		
England & Wales	EU Directive 2002/91/EC	

Agents note:
For more information on this property please refer to the Material Information Brochure on our website.

25 Market Place, Ely, Cambridgeshire, CB7 4NP | 01353 663144 | cheffins.co.uk

IMPORTANT: we would like to inform prospective purchasers that these sales particulars have been prepared as a general guide only. A detailed survey has not been carried out, nor the services, appliances and fittings tested. Room sizes should not be relied upon for furnishing purposes and are approximate. If floor plans are included, they are for guidance only and illustration purposes only and may not be to scale. If there are any important matters likely to affect your decision to buy, please contact us before viewing the property.

